

To start monitoring for bedwetting events, insert the sensor plug into the sensor jack. The alarm unit will beep twice signaling a successful connection has been established.

ALARM MANAGEMENT & REUSE

To stop an active alarm, briefly press the enable button; temporarily silencing the alarm for 1 minute. To completely disable the alarm, disconnect the sensor from the alarm unit. Alarm lights and/or tones will stop, signaling that the alarm unit has entered standby (power save) mode. Wash both surfaces of the sensor with warm water and pat dry with a soft cloth. Replace wet/soiled clothing and reinstall alarm unit and sensor to continue monitoring for the remainder of the night.

CARE & MAINTENANCE

For daytime storage, disconnect the sensor from the alarm unit. The alarm unit beeps once and enters standby (power save) mode.

Chummie Alarm Unit

The alarm unit is not waterproof; keep it dry at all times. Do not allow the alarm unit to come in contact with liquids. Do not immerse the alarm unit in water. Do not operate with wet hands. To clean the alarm unit, scrub gently with a soft cloth.

IntelliFlex Sensor

After each use, rinse both surfaces of the sensor with warm tap water and gently pat dry with a soft cloth. Do not use soap or detergent. Do not pull on the sensor cord. Do not pierce, cut or scratch the sensor.

LONG TERM STORAGE

The Chummie bedwetting alarm treatment system is designed to operate in temperatures between 30°F-120°F (0°C-50°C). If the system is not going to be used for an extended period of time, disconnect the sensor from the alarm unit, remove batteries from the alarm unit, and store in a cool, dry place.

BATTERY REPLACEMENT & DISPOSAL

Do not mix old and new batteries. Replace old batteries with new AAA batteries. Insert batteries with polarity as shown in the battery compartment. Dispose used batteries in accordance with local environmental regulations. Dispose alarm unit and sensor in a similar way as non-hazardous electronic products are disposed.

WARNINGS

The Chummie bedwetting alarm treatment system is not a toy; keep it away from small children. The loud alarm may startle your child when awakened; take adequate precaution to allow your child to get used to the alarm tones. Always run the sensor cord below the shirt. The sensor is not designed for multiple users. Follow good hygiene practice by using a new sensor for each child to be treated. Clean the alarm unit and sensor every night prior to use.

WARRANTY

Theos Medical Systems warrants the Chummie alarm unit for a period of one (1) year and the IntelliFlex sensor for a period of three (3) months against defects in material and workmanship under normal use from the date of purchase. This warranty is non-transferable and does not cover misuse, abuse or damage from negligence. See warranty card for complete details.

For customer support and/or to purchase accessories, contact:



2954 Scott Blvd
Santa Clara, CA 95054, USA.
Tel: (408) 239-4050. Fax: (408) 599-3020
Toll free: (800) 230-6775 (USA)
email: support@chummie.com
www.chummie.com



MDSS GmbH
Schiffgraben 41
30175 Hannover, Germany

Chummie exceeds required performance, construction, and safety requirements. The alarm unit is battery powered and double insulated for added protection. Leakage current across the sensor is less than required for medical surgical devices: less than 8µA in any condition; less than 1µA when sensor is wet.

Chummie, IntelliFlex, Better Technology for Faster Treatment, Flexitape, Comfy-Armband, One Drop Detection, Active Guard Monitoring, Enhanced Protection Plus Care, SmartFit and the Chummie and Theos Medical Systems logos are trademarks or registered trademarks of Theos Medical Systems, Inc.



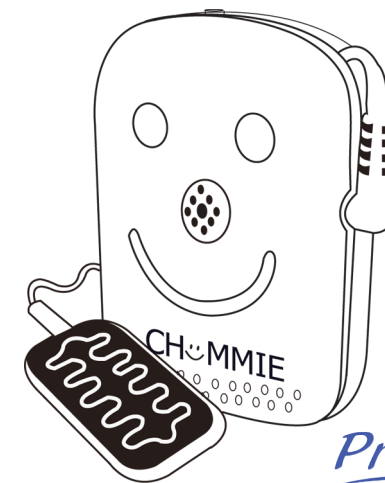
US patents: 8,237,573, 8,253,573. US and International patents pending.

PN/Ref.: TC300. Doc.: TC300-MN-EN-3. Rev. date: 05/2015.

Designed in USA. Manufactured in China.

© 2012-2015 Theos Medical Systems, Inc. All Rights Reserved.

CHÜMMIE®
BEDWETTING TREATMENT SYSTEM



Premium

Model TC300

User Manual & Quick Start Guide (English)

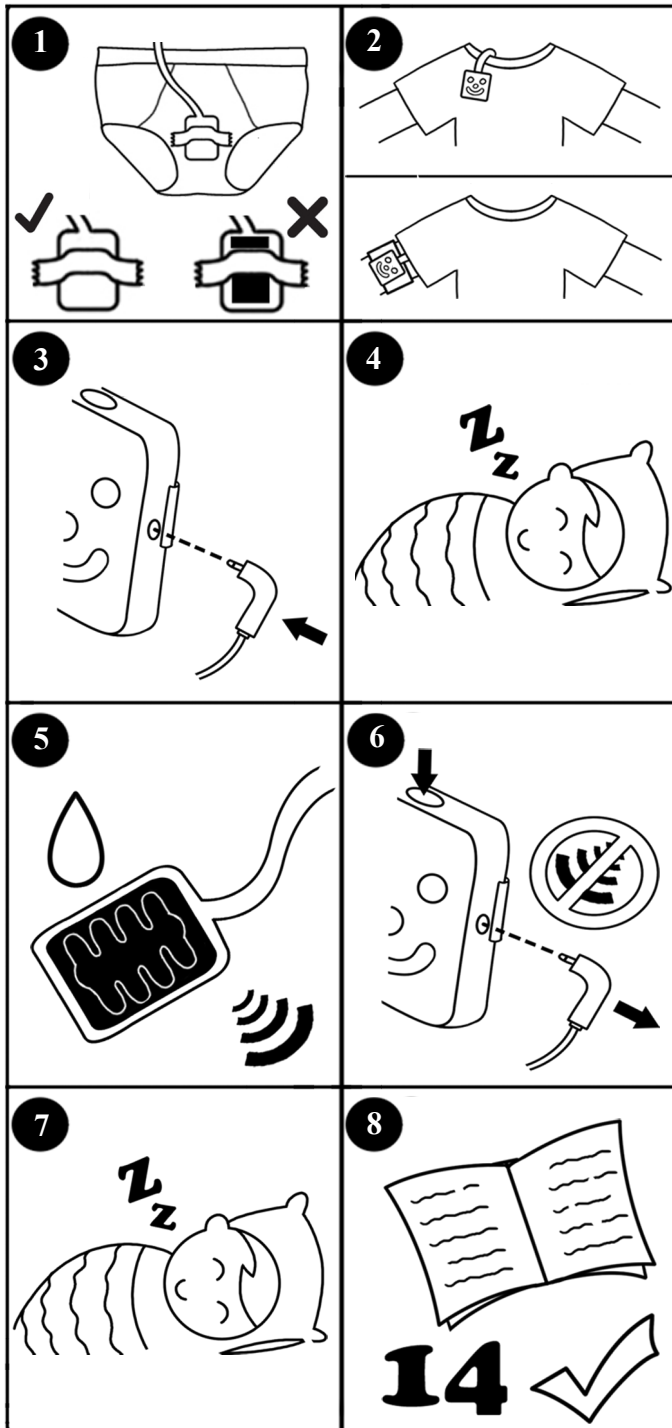
www.chummie.com

The Chummie enuresis alarm is used to treat nighttime bedwetting (nocturnal enuresis) in children 5 years of age and older. When a bedwetting incident occurs, the sensor detects urine and the alarm unit beeps, vibrates, and lights flash to awaken your child. Over time, your child will become conditioned to wake up more quickly with each bedwetting incident and will eventually wake up before wetting the bed. To prevent your child from becoming accustomed to any one alarm, you can select among 8 unique tones, adjust volume level and control vibration. Use the progress diary to track your child's daily progress. A successful treatment requires persistence and positive reinforcement and can take a few months. Chummie should be used nightly until at least 14 consecutive dry nights are achieved, after which the program may be discontinued.

Kit Contents

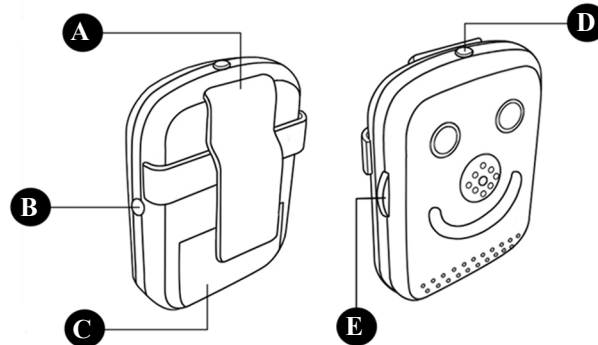
Chummie alarm unit, IntelliFlex sensor, snap-on clip, Flexitape, 2 AAA batteries, user manual & quick start guide, progress diary, achievement award, warranty card.

QUICK START GUIDE



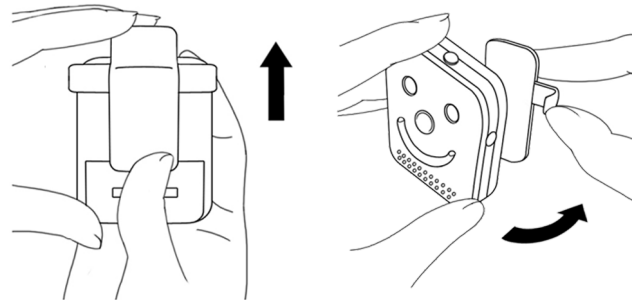
DETAILED INSTRUCTIONS FOR USE

KNOW YOUR CHUMMIE



A - Snap-On Clip B - Sensor Jack C - Battery Door
D - Enable Button E - Program Switch (3-Way Switch)

INSTALLING BATTERIES



Remove the snap-on clip from the back of the alarm unit by pressing upwards from the bottom of the clip or by releasing the alarm unit from the sides of the clip. Open the battery compartment door by sliding it towards the bottom of the alarm unit. Install 2 AAA batteries (included). The alarm unit will turn on with a series of beeps, vibrations and flashing lights. Gently slide the battery compartment door toward the top of the alarm unit to close. Reinstall the snap-on clip.



After each use, rinse both surfaces of the sensor with warm tap water and gently pat dry. Do not use soap.



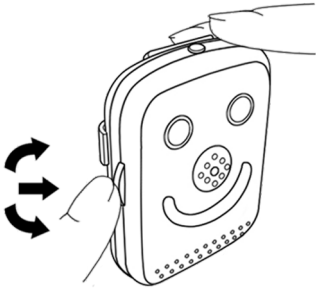
Sensor must be disconnected from the alarm unit to select alarm tone, volume level and vibration.



If alarm beeps once per minute and/or alarm unit buttons are non-responsive, replace batteries.

SETTING TONES, VOLUME & VIBRATION

Disconnect the sensor from the alarm unit by removing the sensor plug from the sensor jack. Briefly press the enable button. The alarm unit will beep once and activate the program switch for 10 seconds. Changes to the alarm can now be made.



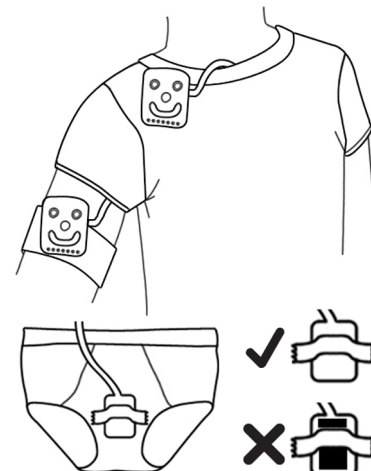
- ♦ Select alarm tones by pressing the program switch inwards. There are 8 tones to choose from. The 9th tone is silent mode - vibration and lights only.
- ♦ Increase or decrease volume by alternately pushing the program switch upwards. Low volume is approximately half as loud as high volume.
- ♦ Enable or disable vibration by alternately pushing the program switch downwards.

The alarm unit will enter standby (power save) mode 10 seconds after the last adjustment is made with the program switch. In standby mode, the program switch is disabled. To select a new alarm, repeat the steps above.

INSTALLING ALARM UNIT & SENSOR

Fasten the alarm unit to the outside neckline or around arm with optional armband accessory (sold separately).

Attach the sensor to the outside of your child's undergarment. Ensure that sensor front (black face) touches the undergarment. Tape the sensor back (white face) with Flexitape (included).



Optionally, tape the sensor and place between two pairs of underwear. **Do not run sensor cord underneath the shirt.**



To extend battery life, disconnect sensor from the alarm unit when not in use.