

To start monitoring for bedwetting events, insert the mat plug into the mat jack. The alarm unit will beep twice signaling a successful connection has been established.

ALARM MANAGEMENT & REUSE

To stop an active alarm, briefly press the enable button; temporarily silencing the alarm for 1 minute. To completely disable the alarm, disconnect the mat from the alarm unit. Alarm lights and/or tones will stop, signaling that the alarm unit has entered standby (power save) mode. Gently wipe the top surface of the mat with a moist cloth. Pat dry with a soft cloth. Replace wet/soiled clothing and reinstall alarm unit and mat to continue monitoring for the remainder of the night.

CARE & MAINTENANCE

For daytime storage, disconnect the mat from the alarm unit. The alarm unit beeps once and enters standby (power save) mode.

Chummie Alarm Unit

The alarm unit is not waterproof; keep it dry at all times. Do not allow the alarm unit to come in contact with liquids. Do not immerse the alarm unit in water. Do not operate with wet hands. To clean the alarm unit, scrub gently with a soft cloth.

IntelliFlex Mat

After each use, gently wipe the top surface of the mat with a moist cloth. Promptly pat dry with a soft cloth. Do not use soap or detergent. Do not pull on the mat cord. Do not pierce, cut or scratch the mat. Do not immerse the mat plug in water.

LONG TERM STORAGE

The CHUMMIE bedwetting treatment system is designed to operate in temperatures between 30°F-120°F (0°C-50°C). If the system is not going to be used for an extended period of time, disconnect the mat from the alarm unit, remove batteries from the alarm unit, and store in a cool, dry place.

BATTERY REPLACEMENT & DISPOSAL

Do not mix old and new batteries. Replace old batteries with new AAA batteries. Insert batteries with polarity as shown in battery compartment. Dispose used batteries in accordance with local environmental regulations. Dispose the alarm unit and mat in a similar way as non-hazardous electronic products are disposed.

WARNINGS

The Chummie bedwetting treatment system is not a toy; keep it away from small children. The loud alarm may startle your child when awakened; take adequate precaution to allow your child to get used to the alarm tones. Always run the mat cord below the shirt when connected to neckline or armband. The mat is not designed for multiple users. Follow good hygiene practice by using a new mat for each child to be treated. Clean the alarm unit and mat every night prior to use.

WARRANTY

Theos Medical Systems warrants the Chummie alarm unit for a period of one (1) year and the IntelliFlex mat for a period of three (3) months against defects in material and workmanship under normal use from the date of purchase. This warranty is non-transferable and does not cover misuse, abuse or damage from negligence. See warranty card for complete details.

For customer support and/or to purchase accessories, contact:

 **THEOS MEDICAL**
SYSTEMS
2954 Scott Blvd
Santa Clara, CA 95054, USA.
Tel: (408) 239-4050. Fax: (408) 599-3020
Toll free: (800) 230-6775 (USA)
email: support@chummie.com
www.chummie.com



MDSS GmbH
Schiffgraben 41
30175 Hannover, Germany

Chummie is designed to exceed required performance, construction, and safety requirements. The alarm unit is battery powered and double insulated for added protection. Leakage current across the mat is less than required for medical surgical devices: less than 8µA in any condition; less than 1µA when sensor is wet.

Chummie, IntelliFlex, Better Technology for Faster Treatment, Flexitape, Comfy-Armband, One Drop Detection, Active Guard Monitoring, Enhanced Protection Plus Care, SmartFit and the Chummie and Theos Medical Systems logos are trademarks or registered trademarks of Theos Medical Systems, Inc.



US patents: 8,237,573, 8,253,573. US and International patents pending.

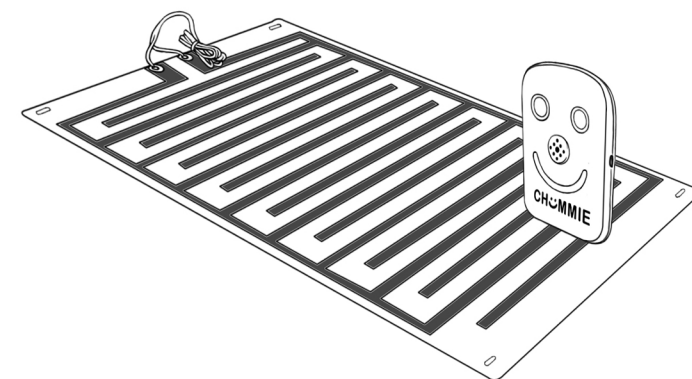
PN/Ref.: TC310. Doc.: TC310-MN-EN-3. Rev. date: 05/2015.

Designed in USA. Manufactured in China.

© 2012-2015 Theos Medical Systems, Inc. All Rights Reserved.

CHUMMIE®
BEDWETTING TREATMENT SYSTEM

Pro



Model TC310

User Manual & Quick Start Guide (English)

www.chummie.com

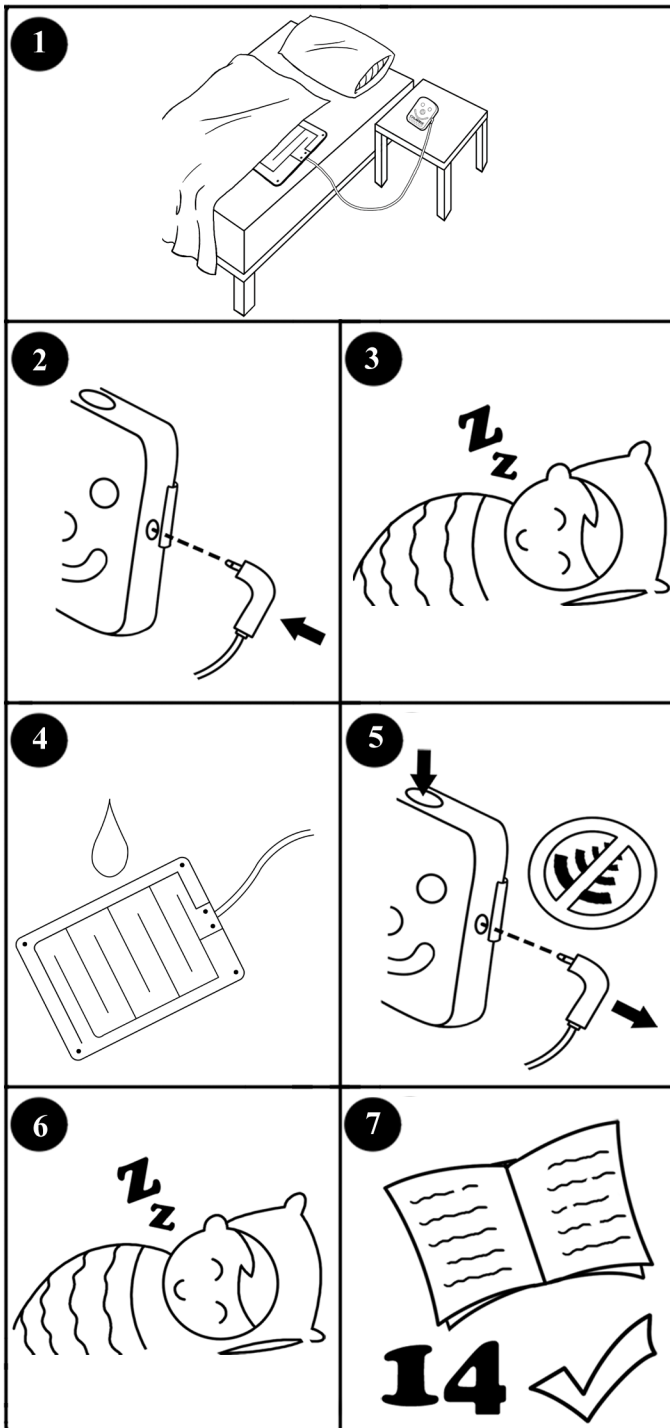
The Chummie enuresis alarm is used to treat nighttime bedwetting (nocturnal enuresis) in children and adults. When a bedwetting incident occurs, the mat detects urine and the alarm unit beeps, vibrates, and lights flash to awaken you. Over time, you will become conditioned to wake up more quickly with each bedwetting incident and will eventually wake up before wetting the bed. To prevent yourself from becoming accustomed to any one alarm, you can select among 8 unique tones, adjust volume level and control vibration.

Children can use the progress diary to track daily progress. A successful treatment requires persistence and positive reinforcement and can take a few months. Chummie should be used nightly until at least 14 consecutive dry nights are achieved, after which the program may be discontinued.

Kit Contents

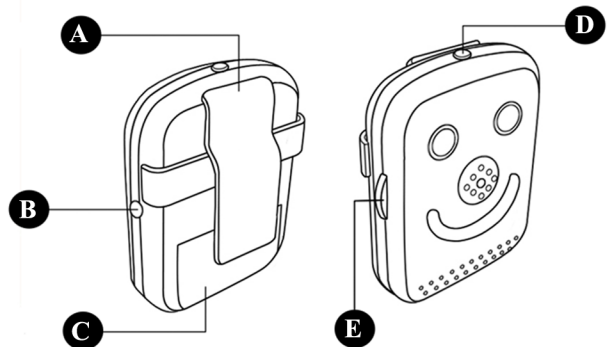
Chummie alarm unit, IntelliFlex mat, snap-on clip, 2 AAA batteries, user manual & quick start guide, progress diary, achievement award, warranty card.

QUICK START GUIDE



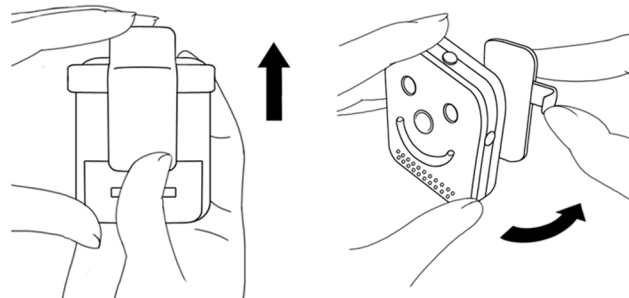
DETAILED INSTRUCTIONS FOR USE

KNOW YOUR CHUMMIE



A - Snap-On Clip B - Mat Jack C - Battery Door
D - Enable Button E - 3-Way Switch

INSTALLING BATTERIES



Your alarm unit comes with batteries pre-installed. Pull out the battery isolator tab to turn on the alarm unit. To install or to replace batteries, remove the snap-on clip from the back of the alarm unit by releasing the alarm unit from the sides of the clip. Open the battery compartment door by sliding it towards the bottom of the alarm unit. Install 2 AAA batteries. The alarm unit will turn on with a series of beeps, vibrations and flashing lights. Reinstall battery compartment door and clip.



To avoid false alarms, do not lay directly on mat. Cover mat with 1-2 cloth sheets and lay on mat.



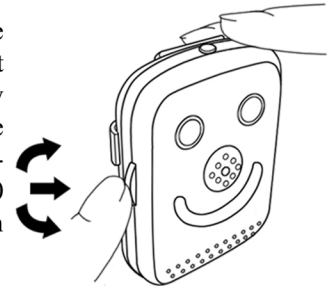
Mat must be disconnected from the alarm unit to select alarm tone, volume level and vibration.



To extend battery life, disconnect mat from the alarm unit when not in use.

SETTING TONES, VOLUME & VIBRATION

Disconnect the mat from the alarm unit by removing the mat plug from the mat jack. Briefly press the enable button. The alarm unit will beep once and activate the 3-way switch for 10 seconds. Changes to the alarm can now be made.



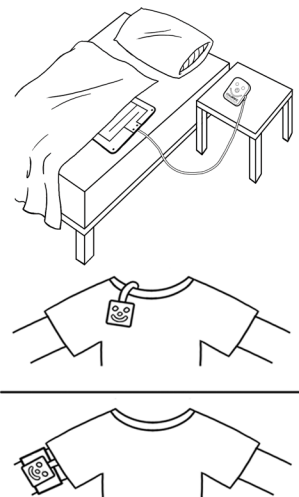
- ♦ Select alarm tones by pressing the 3-way switch inwards. There are 8 tones to choose from. The 9th tone is silent mode - vibration and lights only.
- ♦ Increase or decrease volume by alternately pushing the 3-way switch upwards. Low volume is approximately half as loud as high volume.
- ♦ Enable or disable vibration by alternately pushing the 3-way switch downwards.

The alarm unit will enter standby (power save) mode 10 seconds after the last adjustment is made with the 3-way switch. In standby mode, the 3-way switch is disabled. To select a new alarm, repeat the steps above.

INSTALLING ALARM UNIT & MAT

Place the alarm unit on a bedside table. Optionally, the alarm unit may be fastened to the outside neckline or around arm with arm-band accessory (sold separately).

Lay the mat flat on bed or bedpad with the urine detection surface (printed surface) facing upward. Secure the mat in position by pinning the 4 corners of the mat to the mattress below. Cover the mat with a bedsheet prior to lying on it. The mat is sensitive to perspiration; direct body contact with the mat may lead to false alarms.



If alarm beeps once per minute and/or alarm unit buttons are non-responsive, replace batteries.